

Slimline Electrol 100" y 120"

The Slimline® Electrol® is a value engineered projection screen designed with a smaller, compact case that allows unobtrusive placement in a room, and can be mounted on a wall or ceiling. The pre-wired inline power cord provides convenience for the do-it-yourself home theater.



Features

- In-the-roller motor mounting system
- Pre-wired, inline power cord switch
- White steel case

Optional Accessories:

- Mounting and Extension Brackets
- Green Laser Pointers
- T-Bar Clips
- RF PowerPoint Remote with Green Laser Pointer
- Red Laser Pointers

HDTV (16:9) Format Dimensions (2" Standard Black Drop At Top)

Viewing Area (H x W)		Nominal Diagonal		A - Overall Length of Case		B - Between Hanger Eyes		Approx. Ship. Wt.	
In.	Cm	In.	Cm	In.	Cm	In.	Cm	Lbs.	Kg
45" x 80"	114 x 203	92"	234	89½"	227	88½"	225	26	11.8

Video (NTSC 4:3) Format Dimensions (2" Standard Black Drop At Top)

Viewing Area (H x W)		Nominal Diagonal		A - Overall Length of Case		B - Between Hanger Eyes		Approx. Ship. Wt.	
In.	Cm	In.	Cm	In.	Cm	In.	Cm	Lbs.	Kg
43" x 57"	109 x 145	72"	183	65¼"	166	64½"	164	22	10.0
50" x 67"	127 x 170	84"	213	75¼"	191	74½"	189	24	10.9
60" x 80"	152 x 203	100"	254	89¼"	227	88½"	225	26	11.8
69" x 92"	175 x 234	120"	305	101¼"	257	100½"	255	29	13.2

Square Format Dimensions

Sizes (H x W)		A - Overall Length of Case		B - Between Hanger Eyes		Approx. Ship. Wt.	
In.	Cm	In.	Cm	In.	Cm	Lbs.	Kg
60" x 60"	152 x 152	65¼"	166	64½"	164	22	10.0
70" x 70"	178 x 178	75¼"	191	74½"	189	24	10.9

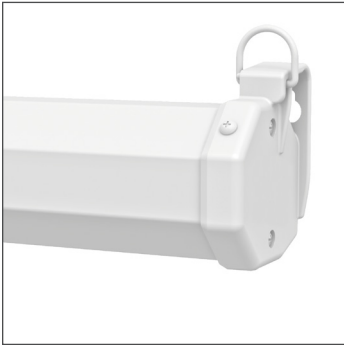
Available with the Following Screen Surfaces



Matte White

Half Angle: 60° Gain: 1.0

Product images



White Case (Standard)



Black Case