



Model C

The Model C is a manual wall- or ceiling-mounted screen for larger rooms with permanently lubricated steel ball bearings combined with nylon bushings and heavy-duty spring assembly for smooth operation.

The Model C does not feature the Controlled Screen Return for quiet and smooth return to the case. See Model C with CSR for this feature.

Features

- Standard white powder-coated finish; available in black upon request
- Includes pull cord
- Optional floating mount brackets for wall or ceiling stud installation can be aligned left or right.

Optional Accessories:

- Ceiling Trim Kit for Model C and Model C with CSR
- Floating Mounting Bracket for Model C and Model C with CSR
- Mounting and Extension Brackets
- Pull Rod
- Tilt Lock

4:3 Video Format

Viewing Area (H x W)		Nominal Diagonal		Overall Case Length	
in.	cm	in.	cm	in.	cm
43" x 57"	109 x 145	72"	183	63 ³ / ₈ "	160
50" x 67"	127 x 170	84"	213	73 ³ / ₈ "	186
60" x 80"	152 x 203	100"	254	87 ⁵ / ₁₆ "	222
69" x 92"	175 x 234	120"	305	99 ⁹ / ₁₆ "	252
87" x 116"	221 x 295	150"	381	123 ³ / ₁₆ "	313
105" x 140"	267 x 356	180"	457	147 ⁵ / ₁₆ "	374
120" x 160"	305 x 406	200"	508	167 ⁵ / ₁₆ "	425

Square Format Dimensions

Sizes (H x W)		A - Overall Length of Case		B - Between Hanger Eyes		Approx. Ship. Wt.	
In.	Cm	In.	Cm	In.	Cm	Lbs.	Kg
60" x 60"	152 x 152	63 ³ / ₈ "	161	61 ¹ / ₈ "	157	26	11.8
70" x 70"	178 x 178	73 ³ / ₈ "	186	71 ¹ / ₈ "	182	31	14.1
72" x 72"	183 x 183	75 ¹ / ₈ "	191	73 ³ / ₈ "	187	33	15.0
84" x 84"	213 x 213	87 ⁵ / ₁₆ "	222	85 ¹³ / ₁₆ "	218	47	21.3
8' x 8'	244 x 244	99 ⁹ / ₁₆ "	252	97 ¹³ / ₁₆ "	248	52	23.6
9' x 9'	274 x 274	111 ⁵ / ₁₆ "	283	109 ¹³ / ₁₆ "	279	60	27.2
10' x 10'	305 x 305	123 ³ / ₁₆ "	313	121 ¹³ / ₁₆ "	309	69	31.3
12' x 12'	366 x 366	147 ⁵ / ₁₆ "	374	145 ¹³ / ₁₆ "	370	85	38.6



16:9 HDTV Format

Viewing Area (H x W)		Nominal Diagonal		Overall Case Length	
in.	cm	in.	cm	in.	cm
45" x 80"	114 x 203	92"	234	87 ⁵ / ₁₆ "	222
52" x 92"	132 x 234	106"	269	99 ⁹ / ₁₆ "	252
54" x 96"	137 x 244	110"	279	103 ³ / ₁₆ "	262
58" x 104"	147 x 264	119"	302	111 ⁵ / ₁₆ "	283
65" x 116"	165 x 295	133"	338	123 ³ / ₁₆ "	313
78" x 139"	198 x 353	159"	404	147 ⁵ / ₁₆ "	374

16:10 Wide Format

Viewing Area (H x W)		Nominal Diagonal		Overall Case Length	
in.	cm	in.	cm	in.	cm
50" x 80"	127 x 203	94"	239	87 ⁵ / ₁₆ "	222
57 ¹ / ₂ " x 92"	146 x 234	109"	277	99 ⁹ / ₁₆ "	252
60" x 96"	152 x 244	113"	287	103 ³ / ₁₆ "	262
65" x 104"	165 x 264	123"	312	111 ⁵ / ₁₆ "	283
69" x 110"	175 x 279	130"	330	117 ⁵ / ₁₆ "	298
72 ¹ / ₂ " x 116"	184 x 295	137"	348	123 ³ / ₁₆ "	313
87" x 139"	221 x 353	164"	417	147 ⁵ / ₁₆ "	374

Available with the Following Screen Surfaces



Matte White

Half Angle: 60° Gain: 1.0



High Contrast Matte White

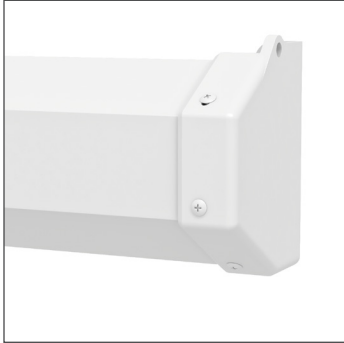
Half Angle: 50° Gain: 1.1



Video Spectra 1.5

Half Angle: 35° Gain: 1.5

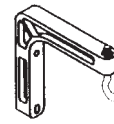
Product images



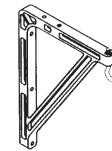
White Case (Standard)



Black Case

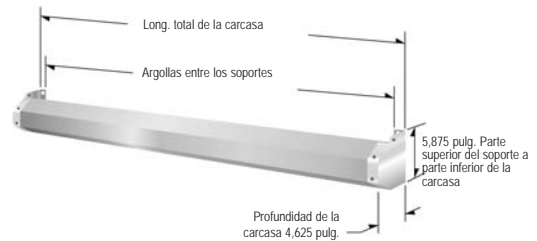
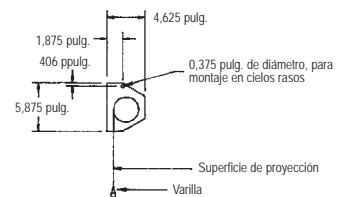


Soporte No. 6, para paredes. No ajustable; permite extender la pantalla 6 pulg. desde la pared.



Soporte No. 11, para paredes. No ajustable; permite extender la pantalla 10 o 14 pulg. desde la pared.

Vista izquierda



A BRAND OF MILESTONE AV TECHNOLOGIES | www.milestone.com

P 800.622.3737 / 574.267.8101 F 877.325.4832 / 574.267.7804

E info@da-lite.com

In British Columbia, Milestone AV Technologies ULC carries on business as MAVT Milestone AV Technologies ULC.

©2018 Milestone AV Technologies. DL-0502 (Rev. 4) 0418.

Da-Lite is a registered trademarks of Milestone AV Technologies. All other brand names or marks are used for identification purposes and are trademarks of their respective owners. All patents are protected under existing designations. Other patents pending.