

# Model B 100" y 120" Diagonal

The Model B® is a manual wall or ceiling-mounted screen with nylon bearings and is designed for medium-sized rooms. The pull down system locks at intervals to fit various projection formats.



## Features

- Nylon bearings for smooth, quiet operation
- White powder-coated case
- Sizes up to 8'
- Includes pull cord

## Optional Accessories:

- Mounting and Extension Brackets
- Pull Rod
- T-Bar Clips
- Tilt Lock
- Red Laser Pointers
- Green Laser Pointers
- RF PowerPoint Remote with Green Laser Pointer

### HDTV (16:9) Format Dimensions

Viewing Area (H x W)		Nominal Diagonal		A - Overall Length of Case		B - Between Hanger Eyes		C - Brackets		D - Case Diameter (Width)		Approx. Ship. Wt.	
In.	Cm	In.	Cm	In.	Cm	In.	Cm	In.	Cm	In.	Cm	Lbs.	Kg
37½" x 67"	95 x 170	77"	196	73%*	186	72%*	184	3%*	8.6	2½"	6	15	6.8
45" x 80"	114 x 203	92"	234	87%*	222	86%*	220	3%*	9.2	2¾"	7	23	10.4
52" x 92"	132 x 234	106"	269	99%*	252	98%*	251	3%*	9.2	2¾"	7	26	11.8

### (16:10) Wide Format Dimensions

Viewing Area (H x W)		Nominal Diagonal		A - Overall Length of Case		B - Between Hanger Eyes		C - Brackets		D - Case Diameter (Width)		Approx. Ship. Wt.	
In.	Cm	In.	Cm	In.	Cm	In.	Cm	In.	Cm	In.	Cm	Lbs.	Kg
50" x 80"	127 x 203	94"	239	87%*	222	86%*	220	3%*	9.2	2¾"	7	24	10.9
57½" x 92"	146 x 234	109"	277	99%*	252	98%*	251	3%*	9.2	2¾"	7	27	12.3

### Video (NTSC 4:3) Format Dimensions

Viewing Area (H x W)		Nominal Diagonal		A - Overall Length of Case		B - Between Hanger Eyes		C - Brackets		D - Case Diameter (Width)		Approx. Ship. Wt.	
In.	Cm	In.	Cm	In.	Cm	In.	Cm	In.	Cm	In.	Cm	Lbs.	Kg
43" x 57"	109 x 145	72"	183	63%*	161	62%*	159	3%*	8.6	2½"	6	13	5.9
50" x 67"	127 x 170	84"	213	73%*	186	72%*	184	3%*	8.6	2½"	6	15	6.8
60" x 80"	152 x 203	100"	254	87%*	222	86%*	220	3%*	9.2	2¾"	7	24	10.9
69" x 92"	175 x 234	120"	305	99%*	252	98%*	251	3%*	9.2	2¾"	7	27	12.3

### Square Format Dimensions

Sizes (H x W)		A - Overall Length of Case		B - Between Hanger Eyes		C - Brackets		D - Case Diameter (Width)		Approx. Ship. Wt.	
In.	Cm	In.	Cm	In.	Cm	In.	Cm	In.	Cm	Lbs.	Kg
40" x 40"	102 x 102	43%*	110	42%*	108	3%*	8.6	2½"	6	9	4.1
50" x 50"	127 x 127	53%*	136	52%*	134	3%*	8.6	2½"	6	12	5.4
60" x 60"	152 x 152	63%*	161	62%*	159	3%*	8.6	2½"	6	14	6.4
70" x 70"	178 x 178	73%*	186	72%*	184	3%*	8.6	2½"	6	17	7.7
72" x 72"	183 x 183	75%*	191	74%*	190	3%*	9.2	2¾"	7	19	8.6
84" x 84"	213 x 213	87%*	222	86%*	220	3%*	9.2	2¾"	7	26	11.8
96" x 96"	244 x 244	99%*	252	98%*	251	3%*	9.2	2¾"	7	30	13.6

Available with the Following Screen Surfaces

---



**Matte White**

Half Angle: 60° Gain: 1.0



**High Contrast Matte White**

Half Angle: 50° Gain: 1.1

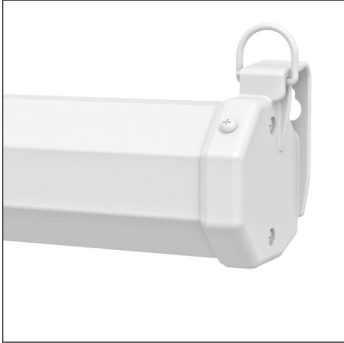


**Video Spectra 1.5**

Half Angle: 35° Gain: 1.5

Product images

---



White Case (Standard)



Black Case



**A BRAND OF MILESTONE AV TECHNOLOGIES** | [www.milestone.com](http://www.milestone.com)

**P** 800.622.3737 / 574.267.8101 **F** 877.325.4832 / 574.267.7804

**E** [info@da-lite.com](mailto:info@da-lite.com)

In British Columbia, Milestone AV Technologies ULC carries on business as MAVT Milestone AV Technologies ULC.

©2017 Milestone AV Technologies. DL-0505 (Rev. 1) 0517.

Da-Lite is a registered trademarks of Milestone AV Technologies. All other brand names or marks are used for identification purposes and are trademarks of their respective owners. All patents are protected under existing designations. Other patents pending.